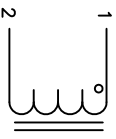
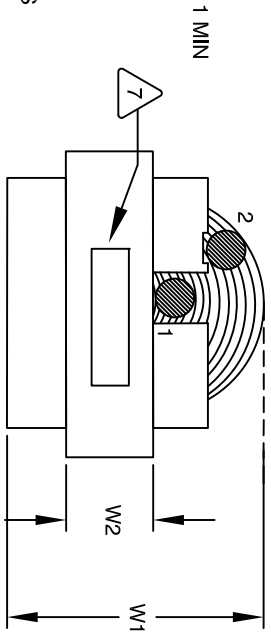
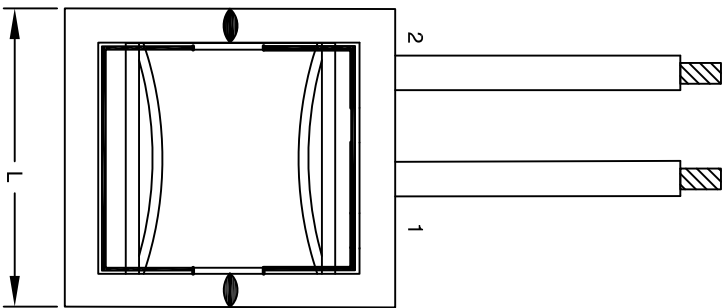
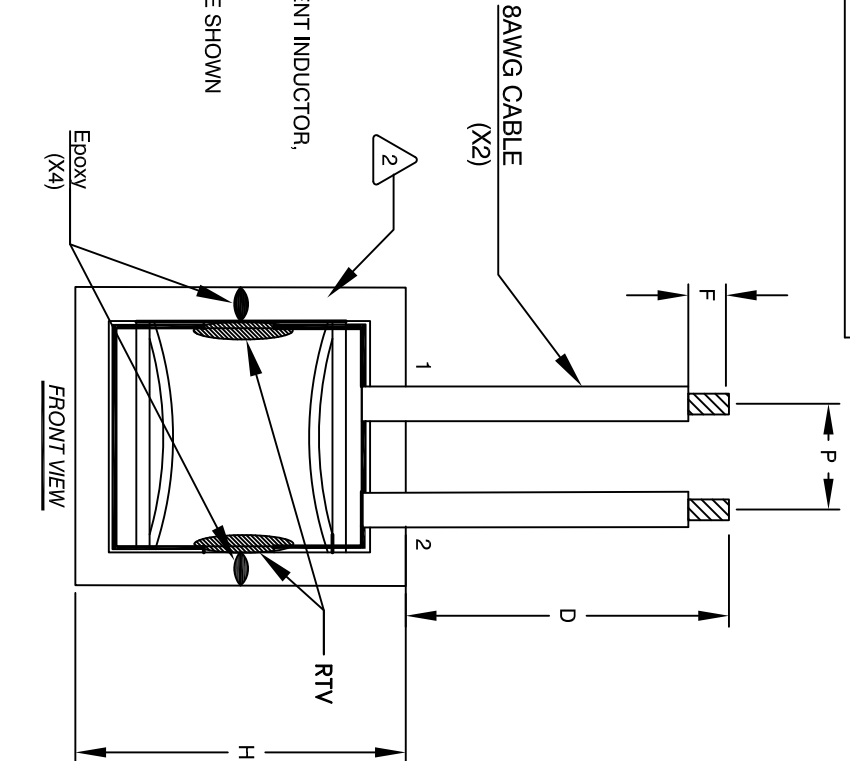


The information contained in this drawing is the sole property of Coil Winding Specialist, Inc. Any reproduction in part or whole without written permission of Coil Winding Specialist, Inc. is prohibited.



**SCHEMATIC**



**TOP VIEW**

**DC BIAS TABLE**

DC-BIAS AMP	L @ 1KHz (REF)
0	620uH
10	526uH
20	382uH
<b>30</b>	<b>258uH</b>
40	198uH
50	165uH

**DIMENSIONS AND TOLERANCE**

	mm	Inch
D	128.25 (TYP)	5.05 (TYP)
F	12.65 (TYP)	0.50 (TYP)
H	78.50 (MAX)	3.10 (MAX)
L	82.30 (MAX)	3.24 (MAX)
W1	66.10 (MAX)	2.60 (MAX)
H2	20.30 (MAX)	0.80 (MAX)
P	25.40 (REF)	1.00 (REF)

- 1 INPUT FILTER.
- 2 APPLICATION: OUTPUT CHOKE, HIGH CURRENT INDUCTOR.
- 3 BUILT TO ROHS COMPLIANCE
- 4 LABEL PART NUMBER AND REVISION WHERE SHOWN
- 5 STRIP AND TIN LEAD WIRES
- 6 VARNISH PART AND CURE
- 7 APPLY SILICONE AND RTV WHERE SHOWN.
- 8 WRAP TAPE AROUND CORES
- 9 WITH CORES AND INSULATOR PRE FORMED FLAT COPPER SHEETS
- 10 CONSTRUCTION:

WEIGHT: 1022 GRAMS TYP  
 RECOMMENDED OPERATING TEMP: -40°C TO 105°C  
 HI-POT TEST FROM WINDING TO CORE 1000VDC @ 2mA, 1 MIN  
 INTERWINDING CAPACITANCE = 26pF TYP @ SRF  
 |Z| = 133 KILO-OHMS TYP @ SRF  
 SRF = 1.28MHZ TYP  
 RATED CURRENT: 50 AMPS  
 DCR = 30 MILLIOHMS MAX.  
 INDUCTOR DC BIAS TABLE: SEE TABLE ON THE RIGHT.  
 L = 620uH TYP MEASURED @ 1 KHz, 0.25V, ZERO DC BIAS  
 SPECIFICATIONS @ 25°C:

VARNISH  
 SILICONE DOW CORNING OR EQUAL  
 OUTER WRAP: .3M GLASS TAPE OR EQUAL  
 CORE: COMPACTED POWDERED CORE  
 MATERIAL: UL RECOGNIZED

NOTES: UNLESS OTHERWISE SPECIFIED READ FROM BOTTOM UP.  
 CAGE CODE: 5DMWE2

**REVISION HISTORY**

REV	ECN	DESCRIPTION	BY	DATE	CHK	DATE
A		PRODUCTION RELEASE	TN	01/29/2020	JL	01/29/2020

**PARTS LIST**

AUTOCAD SOLIDWORKS SIGN	X	DATE	TITLE
DRWN	TN	01/29/2020	High Current Inductor 620 uH, 50 Amps
ENGR	JL	01/29/2020	
APPR	JL	01/29/2020	

UNLESS OTHERWISE SPECIFIED  
 DIMENSIONING AND TOLERANCE PER ANSI Y14.5M AND [DIMETERS].  
 TOLERANCE INCHES:  $\pm .030$   
 TOLERANCE METERS:  $\pm .075$   
 ANGLE PROJECTION  $\angle = 45^{\circ}$   
 DO NOT SCALE DRAWING

www.coilws.com  
 sales@coilws.com  
 Coil Winding Specialist, Inc.  
 353 W. GROVE AVE  
 ORANGE, CA 92665

SIZE: DIM. NO. BLS80E41-621M-50AV  
 SCALE: NOT TO SCALE  
 SHEET 1 OF 1